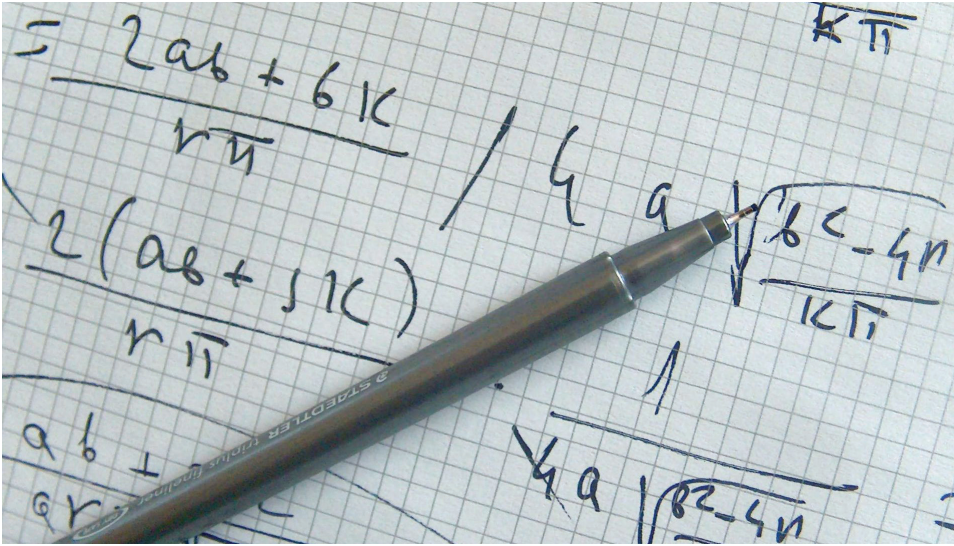


MATHEMATICS

Associate of Science degree



Program and Career Description:

The Mathematics emphasis is a two-year program for students planning to complete a bachelor's degree in Mathematics. Students pursuing careers in actuarial science, operations research, statistics, teaching, and national security should consider this degree. Below are a few examples of career and salary estimates.

Career	Median Salary with BS degree	Experienced Salary Median
Actuary	\$47,360	\$69,250
Statistician	\$38,560	\$62,510
Mathematician	\$35,560	\$64,540

Career and salary information taken from www.bls.gov. Check out this web site for additional information about education requirements and preferred work styles and abilities for these careers. Salaries are not guaranteed.

Transfer Options

This program is a Tennessee Transfer Pathway (TTP) major. A student who completes the associates degree in this major is guaranteed that all required community college courses will be accepted in this major at the transfer institution. To see which four-year institutions offer this TTP major and guarantees a seamless transfer, visit the Tennessee Transfer Pathway website at www.tntransferpathway.org.

Articulation agreements exist between other private and non-TN public institutions. These agreements are available at www.columbiastate.edu/admissions/transfer-information.



MATHEMATICS

Major in Tennessee Transfer Pathway with Emphasis in Mathematics (A.S.)

Program Requirements

Students may be required to take additional Learning Support courses.

Communications Requirement

ENGL 1010, 1020
SPCH 1010 or SPCH 1030

History Requirement (Take 2 courses)

HIST 1110, 1120, 2010, 2020, 2030

Humanities/Fine Arts (Take 3 courses -- one must be a literature course)

ART 1030
ARTH 2010, 2020
ENGL 2015, 2440
HUM 1130, 1131
MUS 1030
PHIL 1030, 2030, 2033
THEA 1030
Literature Options: ENGL 2130, 2230, 2310, 2320, 2920

Natural Sciences Requirement (Take 2 courses)

ASTR 1030
BIOL 1030 (must not be paired with another BIOL)
BIOL 1110, 1120, 2010, 2020
CHEM 1110, 1120
GEOG 1010, 1020
PHYS 2010, 2020, 2110, 2120
PSCI 1030

Mathematics Requirement

MATH 1910

Social/Behavioral Sciences (Take 2 courses)*

ANTH 1200, 1300
COMM 1010
ECON 2010, 2020
GEOG 2010
POL 201
POLS 1020, 1501, 2010
PSYC 1030, 2130
SOC 1010, 1020, 2010

Major Required Courses

CISP 1010**
COLS 101
MATH 1920, 2010, 2110, 2120

*Students who wish to pursue a concentration in actuarial science available at the University of Tennessee, Chattanooga; Middle Tennessee State University; or Tennessee State University should complete ECON 2010 and ECON 2020 to fulfill the requirement in social/behavioral sciences.

**CISP courses have very limited offerings and should be considered first in registration.

If you have completed TN eCampus courses, run a degree audit from the student tab in myChargerNet to determine how these courses apply to this program.

Requirements for Graduation include:

- earning 25% of total program credits in residence at Columbia State.
- cumulative GPA must be 2.0.
- taking the Exit Exam.

2017-2018 Catalog

Sample Academic Plan

Students requiring MATH 1130 and MATH 1730 should take these courses prior to beginning the following pathway to ensure timely completion.

First Year – Fall Semester

___ ENGL 1010 Composition I	3
___ Humanities/Fine Art	3
___ CISP 1010** Computer Science I	4
___ MATH 1910 Calculus and Analytic Geometry I	4
___ COLS 101 Columbia State College Success	1
	15

First Year – Spring Semester

___ ENGL 1020 Composition II	3
___ SPCH 1010 Fundamentals of Speech Communication or SPCH 1030 Argumentation & Debate	3
___ Natural Science Requirement	4
___ MATH 1920 Calculus and Analytic Geometry II	4
	14

Second Year – Fall Semester

___ Literature Requirement	3
___ MATH 2110 Calculus and Analytic Geometry III	4
___ Social/Behavioral Science	3
___ History Requirement	3
___ Natural Science Requirement	4
	17

Second Year – Spring Semester

___ Social/Behavioral Science	3
___ MATH 2120 Differential Equations	3
___ MATH 2010 Linear Algebra	3
___ History Requirement	3
___ Humanities/Fine Arts	3
	15

TOTAL CREDIT HOURS 61

At some universities, foreign language may be required in certain programs that lead to the Bachelor of Arts Degree. Complete information regarding foreign language requirements at each university may be found on the transfer and articulation web sites of the Tennessee Board of Regents and the University of Tennessee System. Community college students are encouraged to be familiar with foreign language requirements at the universities and, if applicable, complete the requirements before transferring.

For more information contact:

James Smith at

jsmith@columbiastate.edu or 931.766.1481

or

Science, Technology and Math Division office at

931.540.2710

Columbia State Community College, a Tennessee Board of Regents institution, is an equal opportunity, affirmative action educational institution.
CoSCC- MATH-05-18-17